

# VENUS OVER MANHATTAN

## Keiichi Tanaami: Manhattan Universe

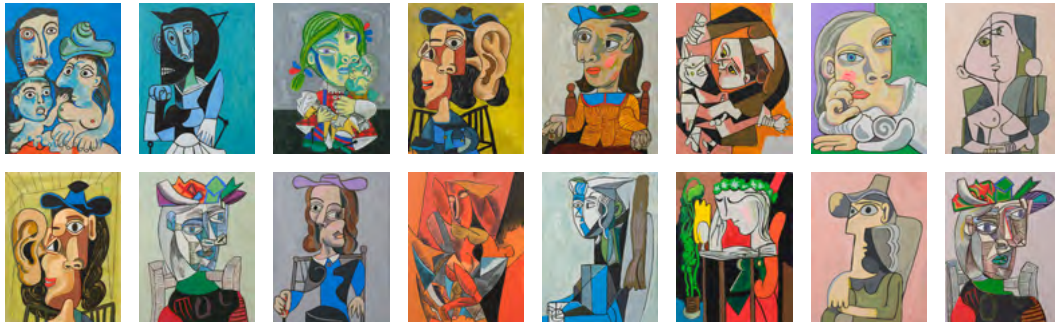
September 8 - October 8, 2022

Opening: September 8th, 6:00 - 8:00 pm

### Venus Over Manhattan

55 Great Jones Street

New York, NY 10065



Top row, from left:

Keiichi Tanaami  
*Pleasure of Picasso –  
Mother & Child Series*  
No. 128, 2020-2022  
Acrylic on canvas  
16 1/4 x 12 1/2 in  
41 x 32 cm

Keiichi Tanaami  
*Pleasure of Picasso –  
Mother & Child Series*  
No. 132, 2020-2022  
Acrylic on canvas  
16 1/4 x 12 1/2 in  
41 x 32 cm

Keiichi Tanaami  
*Pleasure of Picasso –  
Mother & Child Series*  
No. 137, 2020-2022  
Acrylic on canvas  
16 1/4 x 12 1/2 in  
41 x 32 cm

Keiichi Tanaami  
*Pleasure of Picasso –  
Mother & Child Series*  
No. 130, 2020-2022  
Acrylic on canvas  
16 1/4 x 12 1/2 in  
41 x 32 cm

Keiichi Tanaami  
*Pleasure of Picasso –  
Mother & Child Series*  
No. 142, 2020-2022  
Acrylic on canvas  
16 1/4 x 12 1/2 in  
41 x 32 cm

Keiichi Tanaami  
*Pleasure of Picasso –  
Mother & Child Series*  
No. 145, 2020-2022  
Acrylic on canvas  
16 1/4 x 12 1/2 in  
41 x 32 cm

Keiichi Tanaami  
*Pleasure of Picasso –  
Mother & Child Series*  
No. 151, 2020-2022  
Acrylic on canvas  
16 1/4 x 12 1/2 in  
41 x 32 cm

Keiichi Tanaami  
*Pleasure of Picasso –  
Mother & Child Series*  
No. 134, 2020-2022  
Acrylic on canvas  
16 1/4 x 12 1/2 in  
41 x 32 cm

Bottom row, from left:

Keiichi Tanaami  
*Pleasure of Picasso –  
Mother & Child Series*  
No. 129, 2020-2022  
Acrylic on canvas  
16 1/4 x 12 1/2 in  
41 x 32 cm

Keiichi Tanaami  
*Pleasure of Picasso –  
Mother & Child Series*  
No. 133, 2020-2022  
Acrylic on canvas  
16 1/4 x 12 1/2 in  
41 x 32 cm

Keiichi Tanaami  
*Pleasure of Picasso –  
Mother & Child Series*  
No. 122, 2020-2022  
Acrylic on canvas  
16 1/4 x 12 1/2 in  
41 x 32 cm

Keiichi Tanaami  
*Pleasure of Picasso –  
Mother & Child Series*  
No. 140, 2020-2022  
Acrylic on canvas  
16 1/4 x 12 1/2 in  
41 x 32 cm

Keiichi Tanaami  
*Pleasure of Picasso –  
Mother & Child Series*  
No. 147, 2020-2022  
Acrylic on canvas  
16 1/4 x 12 1/2 in  
41 x 32 cm

Keiichi Tanaami  
*Pleasure of Picasso –  
Mother & Child Series*  
No. 127, 2020-2022  
Acrylic on canvas  
16 1/4 x 12 1/2 in  
41 x 32 cm

Keiichi Tanaami  
*Pleasure of Picasso –  
Mother & Child Series*  
No. 148, 2020-2022  
Acrylic on canvas  
16 1/4 x 12 1/2 in  
41 x 32 cm

Keiichi Tanaami  
*Pleasure of Picasso –  
Mother & Child Series*  
No. 136, 2020-2022  
Acrylic on canvas  
16 1/4 x 12 1/2 in  
41 x 32 cm

# VENUS OVER MANHATTAN

## Keiichi Tanaami: Manhattan Universe

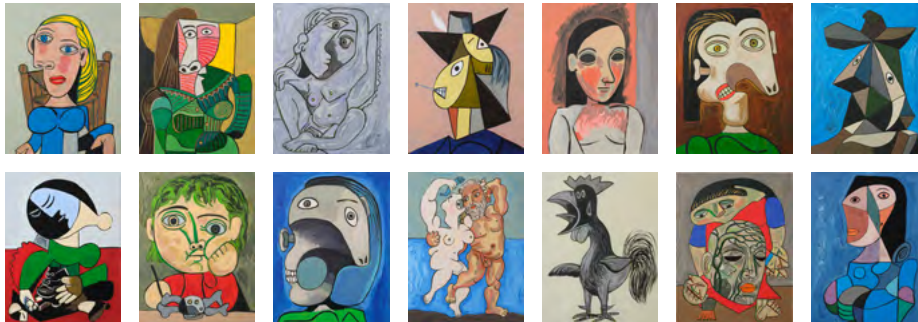
September 8 - October 8, 2022

Opening: September 8th, 6:00 - 8:00 pm

### Venus Over Manhattan

55 Great Jones Street

New York, NY 10065



Top row, from left:

Keiichi Tanaami  
*Pleasure of Picasso –  
Mother & Child Series*  
No. 123, 2020-2022  
Acrylic on canvas  
16 1/4 x 12 1/2 in  
41 x 32 cm

Keiichi Tanaami  
*Pleasure of Picasso –  
Mother & Child Series*  
No. 144, 2020-2022  
Acrylic on canvas  
16 1/4 x 12 1/2 in  
41 x 32 cm

Bottom row, from left:

Keiichi Tanaami  
*Pleasure of Picasso –  
Mother & Child Series*  
No. 125, 2020-2022  
Acrylic on canvas  
16 1/4 x 12 1/2 in  
41 x 32 cm

Keiichi Tanaami  
*Pleasure of Picasso –  
Mother & Child Series*  
No. 143, 2020-2022  
Acrylic on canvas  
16 1/4 x 12 1/2 in  
41 x 32 cm

Keiichi Tanaami  
*Pleasure of Picasso –  
Mother & Child Series*  
No. 139, 2020-2022  
Acrylic on canvas  
16 1/4 x 12 1/2 in  
41 x 32 cm

Keiichi Tanaami  
*Pleasure of Picasso –  
Mother & Child Series*  
No. 141, 2020-2022  
Acrylic on canvas  
16 1/4 x 12 1/2 in  
41 x 32 cm

Keiichi Tanaami  
*Pleasure of Picasso –  
Mother & Child Series*  
No. 124, 2020-2022  
Acrylic on canvas  
16 1/4 x 12 1/2 in  
41 x 32 cm

Keiichi Tanaami  
*Pleasure of Picasso –  
Mother & Child Series*  
No. 135, 2020-2022  
Acrylic on canvas  
16 1/4 x 12 1/2 in  
41 x 32 cm

Keiichi Tanaami  
*Pleasure of Picasso –  
Mother & Child Series*  
No. 131, 2020-2022  
Acrylic on canvas  
16 1/4 x 12 1/2 in  
41 x 32 cm

Keiichi Tanaami  
*Pleasure of Picasso –  
Mother & Child Series*  
No. 146, 2020-2022  
Acrylic on canvas  
16 1/4 x 12 1/2 in  
41 x 32 cm

Keiichi Tanaami  
*Pleasure of Picasso –  
Mother & Child Series*  
No. 149, 2020-2022  
Acrylic on canvas  
16 1/4 x 12 1/2 in  
41 x 32 cm

Keiichi Tanaami  
*Pleasure of Picasso –  
Mother & Child Series*  
No. 150, 2020-2022  
Acrylic on canvas  
16 1/4 x 12 1/2 in  
41 x 32 cm

Keiichi Tanaami  
*Pleasure of Picasso –  
Mother & Child Series*  
No. 126, 2020-2022  
Acrylic on canvas  
16 1/4 x 12 1/2 in  
41 x 32 cm

Keiichi Tanaami  
*Pleasure of Picasso –  
Mother & Child Series*  
No. 138, 2020-2022  
Acrylic on canvas  
16 1/4 x 12 1/2 in  
41 x 32 cm

# VENUS OVER MANHATTAN

## Keiichi Tanaami: Manhattan Universe

September 8 - October 8, 2022

Opening: September 8th, 6:00 - 8:00 pm

Venus Over Manhattan

55 Great Jones Street

New York, NY 10065



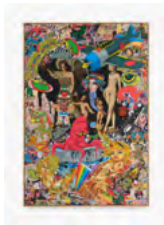
Keiichi Tanaami

*Adventure of the Eyes 29, 2022*

Digital canvas print, magazine pages, ink, acrylic paint,  
rhinestone on canvas

76 1/2 x 51 1/4 in

194 x 130 cm



Keiichi Tanaami

*Adventure of the Eyes 28, 2022*

Digital canvas print, magazine pages, ink, acrylic paint,  
rhinestone on canvas

76 1/2 x 51 1/4 in

194 x 130 cm



Keiichi Tanaami

*Adventure of the Eyes 30, 2022*

Digital canvas print, magazine pages, ink, acrylic paint,  
rhinestone on canvas

76 1/2 x 51 1/4 in

194 x 130 cm



Keiichi Tanaami

*Fragment of Time, 2022*

Pigmented ink, acrylic silkscreen medium, crushed glass,  
glitter, acrylic paint on canvas

Triptych, each panel: 80 3/8 x 39 3/8 in (204 x 100 cm)

Overall: 80 3/8 x 118 1/8 in (204 x 300 cm)

# VENUS OVER MANHATTAN

## Keiichi Tanaami: Manhattan Universe

September 8 - October 8, 2022

Opening: September 8th, 6:00 - 8:00 pm

Venus Over Manhattan

55 Great Jones Street

New York, NY 10065



Keiichi Tanaami

*Indication and Emergence*, 2021

Pigmented ink, acrylic silkscreen medium, crushed glass, glitter, acrylic paint on canvas

Triptych, each panel: 78 3/4 x 39 3/8 in (200 x 100 cm)

Overall: 78 3/4 x 118 1/4 in (200 x 300 cm)



Keiichi Tanaami

*Earthly Paradise B*, 2022

Pigmented ink, acrylic silkscreen medium, crushed glass, glitter, acrylic paint on canvas

60 x 40 in

153 x 100 cm



Keiichi Tanaami

*Earthly Paradise A*, 2022

Pigmented ink, acrylic silkscreen medium, crushed glass, glitter, acrylic paint on canvas

60 x 40 in

153 x 100 cm



Keiichi Tanaami

*Ecstasy of Eyes*, 2022

Pigmented ink, acrylic silkscreen medium, crushed glass, glitter, acrylic paint on canvas

Diptych, each panel: 57 x 39 3/8 in (145 x 100 cm)

Overall: 57 x 78 3/4 in (145 x 200 cm)